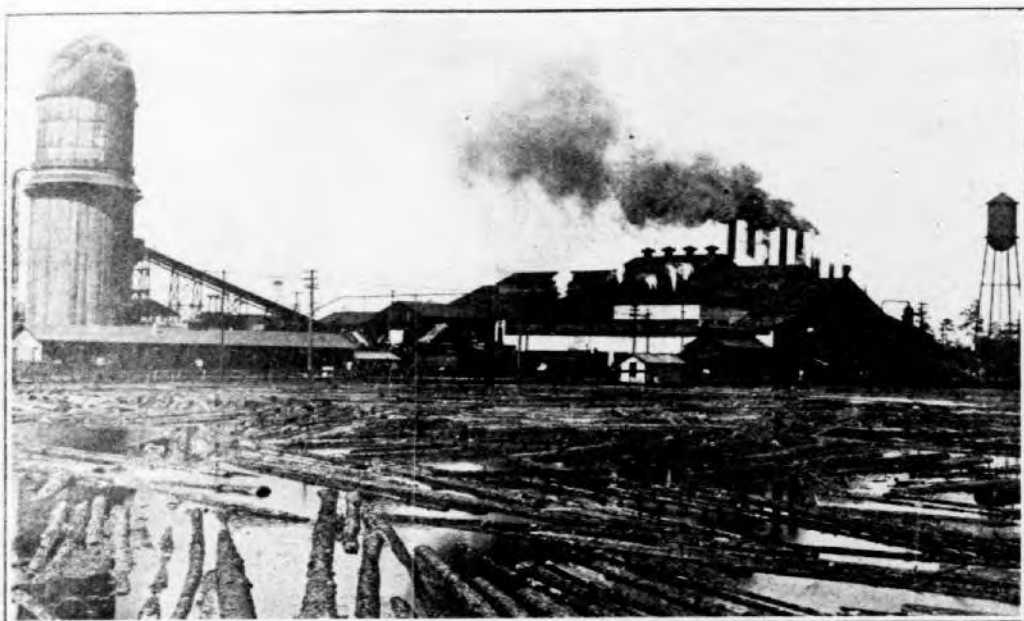


Substantial, Prosperous,
Healthful, Growing

BOGALUSA

The Magic City
of Louisiana



THE SAWMILL
CAPACITY ONE MILLION FEET PER DAY.

A Place Where You May Become a "Life-Partner"

In a thriving, contented, liberty-loving community; where your children's children can build on the foundation you have laid. Right now the city has a population of 15,000.

THE CITY OF BOGALUSA is the seat of a large industry. It is a place where you can find the widest range of business opportunities. It is a place where you can find the best of everything. It is a place where you can find the best of everything.

The Great Southern Lumber Co. is in position to offer employment to white and colored men and women and especially to School Boys between the ages of 18 and 20 years, who during vacation are anxious to learn something about the Lumber or Paper Business.

A City of Happy Homes and Permanent Prosperity

For that is what Bogalusa is—a good place to live—and work—and make money—and raise a family. A place where you can have good churches; good schools; good doctors; good neighbors—and good jobs for your boys when they grow up.

Bogalusa has a Building and Loan Association, with a large capital stock, anxious to have you build a home in Bogalusa. For further information, in reference to this, write A. N. Hobbs, Secretary, Bogalusa Building and Loan Association.

Facts About Bogalusa

It has electric lights and municipally-owned modern water and sewerage systems.

Every home occupied by white people, negroes and colored people is equipped with modern conveniences.

It has churches of all denominations, where services are held regularly.

It has several beautiful parks, where free entertainment and other amusements are provided.

It has a magnificent Negro Y. M. C. A. Building, one of the finest in the South.

It has a Negro Y. W. C. A. Building, fully equipped and the finest building of its kind in Louisiana.

It has a modern paid Fire Department. The fire fighting apparatus consists of two automobile pumps and chemical engines, and six hose carts.

It has free mail delivery and eight post-offices daily.

It has a \$12,000 Armory Building—the first in the State of Louisiana to be built by the organization out of its own funds.

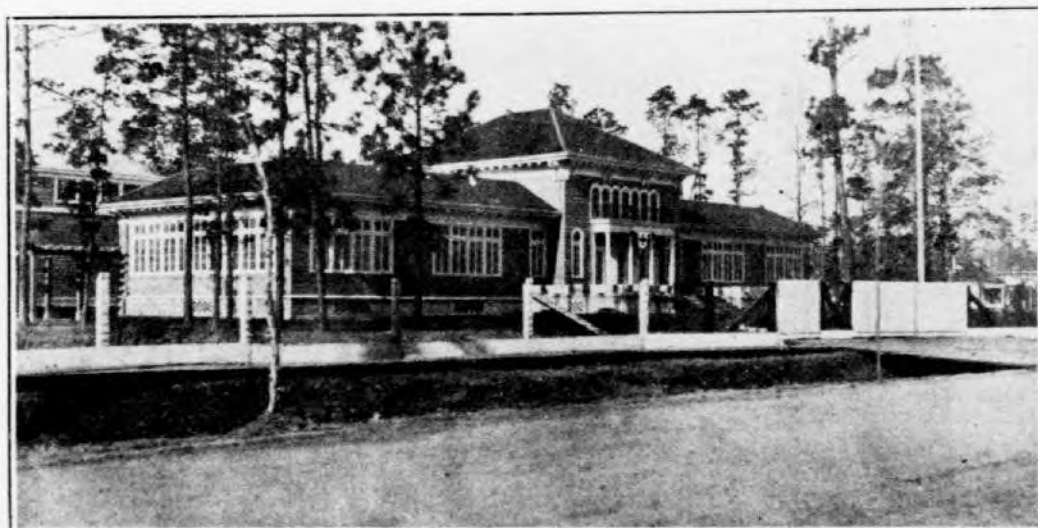
It has a modern and highly efficient Hospital in charge of the best doctors, surgeons and nurses.

It has a magnificent new \$35,000 Court House and City Hall.

It has an approved High School and six graded schools, with 35 competent teachers.

It has an up-to-date creamery and a modern ice plant.

It has everything in the way of modern mercantile establishments and city conveniences.



THE Y. W. C. A., BOGALUSA.



THE Y. M. C. A., BOGALUSA.

The World's Largest Saw Mill

The Great Southern Lumber Company is the largest owner of its kind in the world.

It has over 100,000 acres of land, and cuts six hundred million feet of lumber annually.

The company has a large tract of land to keep the logs from rotting for 100 to 25 years.

The Great Southern Lumber Company has just completed a two million dollar plant for the manufacture of paper from waste timber cuttings. Other similar plants will be started soon.

The company provides modern, well-equipped homes for its employees at very low rentals. Water and electric lights are furnished them without cost.

It agrees to fence and plow any of its available surplus land and allow the use of it free to its employees who want a garden.

The Great Southern Lumber Company, through its Forestry Department, has developed many modern and profitable farms.

The Bogalusa Lumber Company, a subsidiary company of the Great Southern Lumber Company, operates two plants with a total capacity of 350 cars per year. It employs 475 men.

A MONTHLY PAYROLL of \$293,500.00

The combined payroll of the industries of Bogalusa is more than a quarter of a million dollars every month in the year. Millions of dollars are being invested in permanent enterprises that will require the services of thousands of good men, and will furnish steady work and good wages at all times.

The Great Southern Lumber Company, with a monthly payroll of \$175,000, pays its employees IN CASH and pays them AS OFTEN as they want their money. This plan enables a GREAT SOUTHERN worker to get his money at the end of EACH DAY if he prefers it this way.

BOGALUSA

Is a Good Place to Live

Twelve years ago the Bogalusa townsite was a pine forest. Today the city has a population of 15,000, with the combined deposits of the two banks amounting to \$1,500,000—or an average of \$100 per capita. Each year it GROWS!



THE PINE TREE INN, BOGALUSA, ONE OF THE FINEST HOTELS IN THE SOUTH.

For Further Information Write to
EMPLOYMENT BUREAU
BOGALUSA, LOUISIANA